



HEYMANN
PERFORMING ARTS

Technical Specifications

(Revised October 8, 2007)

Heymann Performing Arts
& Convention Center
(HPACC)

1373 South College Road
Lafayette, LA 70503
TEL: (337) 291-5540
FAX: (337) 291-5580

Capacity:

ORCHESTRA: 1,230 SEATS
BALCONY: 1,000 SEATS
TOTAL CAPACITY: 2,230 SEATS

Guest Production Communication Options:

Free Wireless Internet

Phone & Fax Lines

\$90.00 per line

Star Dressing Room 1): (337) 261-2334
(337) 291-5439
(337) 234-7569 FAX

Star Dressing Room 2): (337) 261-0034
(337) 291-5469

Wardrobe Room: All 5 phone lines above



DIRECTIONS TO THE HEYMANN CENTER

IF YOU ARE TRAVELING:

- EASTBOUND - INTERSTATE 10 (LAKE CHARLES, BEAUMONT TEXAS)**
Take Exit 101 to North University Ave. Follow North University Ave. through the city until North University intersects with Pinhook Rd. Turn right on Pinhook Rd. Continue until light at South College Rd. Turn Right on South College. After about one half mile, Heymann Performing Arts Center's marquee will be visible to your right.
- WESTBOUND - INTERSTATE 10 (NEW ORLEANS, BATON ROUGE)**
Take Exit 101 (Carencro/University Exit). Turn left under interstate onto North University Ave. Follow North University Ave. through the city until North University intersects with Pinhook Rd. Turn right on Pinhook Rd. Continue until light at South College Rd. Turn Right on South College. After about one half mile, Heymann Performing Arts Center's marquee will be visible to your right.
- SOUTH BOUND - INTERSTATE 49 (ALEXANDRIA, SHREVEPORT, DALLAS)**
Follow Highway 167 onto Evangeline Thruway. Stay on the thruway all the way to Pinhook Rd. Turn right on Pinhook Rd. Continue until light at South College Rd. Turn Right on South College. After about one half mile, Heymann Performing Arts Center's marquee will be visible to your right.
- NORTH BOUND - U.S. 90 (NEW IBERIA, MORGAN CITY)**
Follow U.S. 90 to Pinhook Rd. Turn left on Pinhook Rd. Continue until light at South College Rd. Turn Right on South College. After about one half mile, Heymann Performing Arts Center's marquee will be visible to your right.

Note:

HEYMANN PERFORMING ARTS AND CONVENTION CENTER
WAS FORMERLY THE LAFAYETTE MUNICIPAL AUDITORIUM.



STAFF:

General Manager	Frank Bradshaw	(337) 291-5540
Booking	Susan Anderson	(337) 291-5540 ext. 224
Box Office Manager	Elnora Plumbar	(337) 291-5540 ext. 223
Event Coordinator	Phillip Lukinovich	(337) 291-5540 ext. 225
Production Coordinator	Blane Toce	(337) 291-5540 ext. 231
Stage Manager	Dennis Skerrett	(337) 291-5540 ext. 234
Maintenance Supervisor	Mike McGuirk	(337) 291-5540 ext. 230

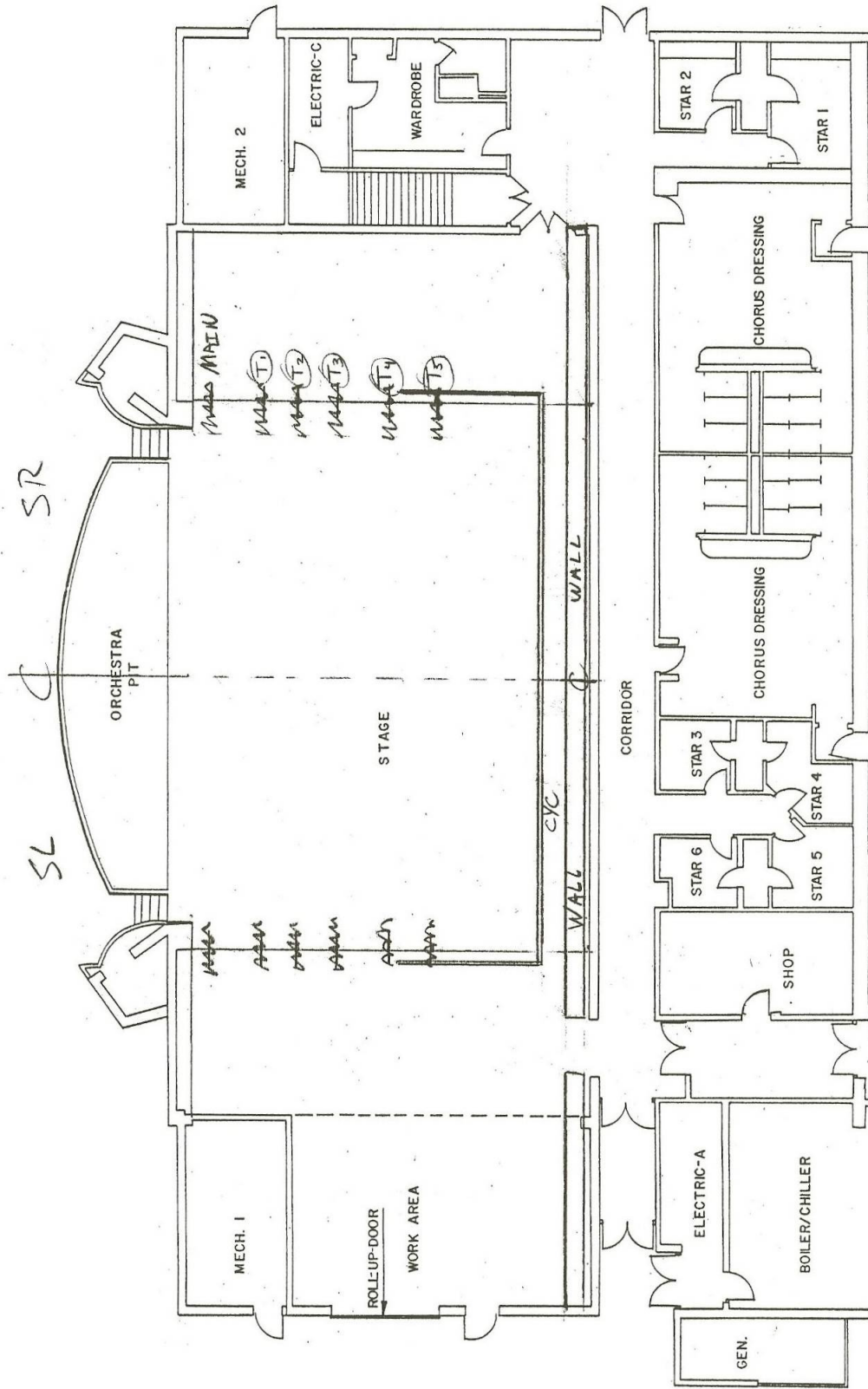
CREW CALLS:

Technical staff is coordinated by HPACC and provided by **Rhino Productions** of Louisiana. Please Contact HPACC's Blane Toce (Production Coordinator) and/or Dennis Skerrett (Stage Manager) to establish your needs. Rates and conditions can be made available to you. Once we have your crew call we will forward it to Rhino. Their bill will be separate and in addition to HPACC rental fees. Once again:

RHINO LOUISIANA WILL BILL YOU DIRECTLY. A DEPOSIT MAY BE REQUIRED.

The Heymann Performing Arts Center is a **non-union house**.
For **union shows**, please contact Todd Johnson (337) 439-8778, (337) 431-9747

STAGE & DRESSING AREA





GENERAL INFO

Loading: RAMP OFF TRUCK, stage is street level
Loading door: 12ft x 12ft, located SL at street level
Forklift: 3000 lbs capacity, Unleaded Gasoline
Truck/Bus parking: Onsite, 200amp shore power available

Power: (For bare wire tails)
Sound: 100amp 3phase power supply, located SR
Lights: 600amp 3phase power supply, located SR
Extra: 200amp 3phase power supply, 75' from stage
Shore power: 200amp 3phase power supply, located outside SL

Stage Measurements:

Proscenium height: 23ft
Proscenium width: 54ft
Grid height: 51ft
Smoke pocket to upstage wall: 43ft
Smoke pocket to apron: 4ft
Smoke pocket to house curtain: 1ft
Proscenium to lip of stage: 3ft
Center line to SR wall: 49ft 6in
Center line to SL wall: 49ft 6in
SL wall to SR wall: 99ft
SR Fly Rail height: 12ft 11in
Fly Rail: 43ft x 8ft

Orchestra Pit:

Orchestra pit to apron at center line: 11ft
Orchestra pit extension under apron: 8ft
Orchestra pit width at apron: 47ft 8in
Orchestra pit depth: 6ft 4in
Pit cover available: Stage height – It is NOT a hydraulic lift



DRESSING & BATHS:

- All bathrooms have showers and sinks with hot and cold water.
- Star dressing rooms are paired off, each pair adjoined by a shared bathroom.
- All dressing rooms outfitted with makeup counters, mirrors, lights, power, TV with house video feed, and backstage page.
- Chairs with backs provided up to capacity.
- Adjoining ballroom can be booked for additional dressing, wardrobe, and/or hospitality needs.
- Free wireless internet throughout building.

ROOM	RELATION TO STAGE	CAPACITY	BATHS	OTHER
WARDROBE	SR	5	1 PRIVATE	2 - Washers 2 - Dryers 2 - Steamers 5 - Phone lines
STAR 1	USR	2	1 SHARED	2 - Phone lines
STAR 2	USR	2	1 SHARED	3 - Phone lines
STAR 3	USL	2	1 SHARED	
STAR 4	USL	2	1 SHARED	
STAR 5	USL	2	1 SHARED	
STAR 6	USL	2	1 SHARED	
MEN'S CHORUS	USR	20	3 STALLS	
WOMEN'S CHORUS	USL	20	3 STALLS	



RIGGING

Grid:	Wall to Wall Grid @ 51ft
Fly System:	Double Purchase Fly System.
Available Linesets:	28 Linesets, plus 4 motorized (LX)
Batten Length:	64ft minimum
Arbor Capacity:	1,400 LBS per Lineset
Available Weight:	60,000 LBS in theater
Best drop dimensions:	(w) 60ft x (h) 22-25ft (to be masked properly)
House curtain:	Travel or Guillotine, operated from SR
Travelers:	5 - Black velour 64' x 23', 50% fullness.
Full Stage Black:	1- Black velour 64' x 23', 50% fullness.
Cyc:	1- Sky Blue Width 65ft x Depth 16ft x Height 23ft (Wraps around line-sets 26 through 39)

Work Around:

- Five travelers are permanently installed. Bottoms clear 26ft when flown out. (not included in available lineset count)
- Cyclorama is permanently installed. Bottom clears 38ft when flown out.
- Fly rail overhead @ 12ft 11in SR – protrudes 8ft from SR wall
- Linesets # 3, 14 27, & 37 are motorized and very slow. They are best used as electrics or at a fixed height.

LINE-SET SCHEDULE

DISTANCE	LINESET	DESCRIPTION	ARBOR LBS (Double)	NOTES
1'10"	1	VALANCE		
2'6"	2	MAIN CURTAIN		
4'	3	1 ST ELECTRIC	Motor	
5'2"	4			
6'6"	5			
7'2"	6	1 ST TRAV		
7'10"	7			
8'6"	8			
9'2"	9			
9'10"	10			
10'6"	11			
11'2"	12			
11'10"	13	2 ND TRAV		
13'4"	14	2 ND ELECTRIC	Motor	
15'2"	15			
15'10"	16			
16'6"	17	3 RD TRAV		
17'2"	18			
17'10"	19			
18'6"	20			
19'2"	21			
19'10"	22			
20'6"	23			
21'2"	24			
21'10"	25			
22'6"	26	4 TH TRAV		
24'	27	3 RD ELECTRIC	Motor	
25'2"	28			
25'10"	29			
26'6"	30			
27'2"	31	5 TH TRAV		
27'10"	32			
28'6"	33			
29'2"	34			
29'10"	35			
31'2"	36			
33'	37	4 TH ELECTRIC	Motor	
34'6"	38			
35'10"	39			
38'6"	40	CYC		
39'2"	41	CYC TRIP		



HEYMANN
PERFORMING ARTS

SOUND INFORMATION

(Page 1 of 2)

I SIGNAL PROCESSING

1 ALLEN-HEATH ML 5000 32 12X8 MATRIX
1 PRESONUS ACP 88 (8 COMP/LIMIT/GATES)
2 DBX 231 DUAL CHANNEL EQ
1 PCM 42 DIGITAL DELAY
1 YAMAHA SPX 90
1 DUAL CASSETTE DECK
1 NUMARK CDN25 PRO DUAL CD PLAYER
1 SONY MDS-JE 500 MINI DISK RECORDER/PLAYER

II POWER AMPS

12 YAMAHA PD2500 POWER AMPS
9= AMPS FOR CENTRAL CLUSTER
1=AMP FOR UNDER BALCONY
2=AMPS FOR MONITORS (4 TOTAL MONO CHANNELS)
1 QSC RMX 1450 POWER AMP
1=AMP FOR LIP FILLS
2 CROWN POWER AMPS AND 1 RAYNE 4C22 CROSSOVER
2= AMPS AND CROSSOVERS FOR FILLS AND SUBS



HEYMANN
PERFORMING ARTS

SOUND INFORMATION

(Page 2 of 2)

III Speakers

CENTRAL CLUSTER

8 JBL 18" SUBS
5 COMMUNITY M4 MIDRANGE DRIVERS
3 EV HP640 HORNS
2 EV DH1A HIGH FREQUENCY HORNS

FRONT FILLS

2EV SH 1502 FRONT FILLS
2BAG END S18E-C SUBS
4SSM APOGEE LIP FILLS W/PROCESSOR

STAGE MONITORS

6EV SX 300PI MONITORS (4 installed over head)
4 PEAVEY HOTSPOTS
2 EV 12C WEDGES
2FM -1202 WEDGES
2 GA HOTSPOTS

IV Microphones

6 EV - RE 11
6 BEYER M600 NC
3 CROWN PZM300 RG
6 CROWN PCC160
2 AUDIO TECHNICA AT4031
4 AKG C460 B (with CK1 head)
1 SHURE BETA 52
5 SURE SM58
4 SURE BETA SM58
4 SURE SM57
8 WIRELESS BETA 58 OR LAPEL - 4 RECIEVERS INSTALLED, 4 PORTABLE.



HEYMANN
PERFORMING ARTS

LIGHTING INFORMATION

(Page 1 of 2)

POWER: 600A 3 PHASE, LOCATED DSR
CONNECTORS: 20A TWIST LOCK (STYLE = PIN IN)
FOH TRANSFER PANEL: STAGE PIN LOCATED DSR, CIRCUIT NUMBERS 1 - 40
DIMMERS (STRAND): 170 (2.4K) + 4 (6K) = 174 TOTAL (HARDWIRED OFFSTAGE)
LIGHTING BOARDS: ETC CONGO IN BOOTH, STRAND 300 24/48 DSR
DMX TIE IN: NODES LOCATED ONSTAGE & IN BOOTH

FOH COVE: (1) 24 CIRCUITS, (1-24)
60 DEGREE ANGLE
50FT THROW TO PROSCENIUM

FOH BOX BOOMS: (2) 8 CIRCUITS PER, (SR=25-32, SL=33-40)
25-30 DEGREE ANGLE
55FT THROW TO PROSCENIUM @ CENTER

INSTRUMENT INVENTORY:

COMPANY	ITEM	WATTAGE	TOTAL	WEIGHT
ETC	SOURCE 4 19DEG	575W	36	25 LBS.
ETC	SOURCE 4 26DEG	575W	36	25 LBS.
ETC	SOURCE 4 36DEG	575W	36	25 LBS.
ETC	SOURCE 4 50DEG	575W	6	25 LBS.
ETC	SOURCE 4 VARIABLE 25-50DEG	575W	6	25 LBS.
STRAND	FRESNEL 6"	1KW	30	16 LBS.
STRAND	FRESNEL 8"	1KW/2KW	20	18 LBS.
ALTMAN	PAR 64	1KW	20	5 LBS.
ETC	SOURCE 4 PAR	575W	24	12 LBS.
IRIS	IRIS CYC LIGHT	1500W	8	30 LBS.
HIGH END	TRACKSPOT	250W	8	22 LBS.
WILDFIRE	LONG THROW BLACKLIGHT	400W	2	36 LBS.
HIGH END	F-100 Smoke machine	14A	2	32LBS
REELEFX	DF-50	5A	1	35LBS



HEYMANN
PERFORMING ARTS

LIGHTING INFORMATION

(Page 2 of 2)

House Gel Colors:

(Roscolux)

R02-Bastard Amber
R03-Dark Bastard Amber
R05-Rose Tint
R06-N/C Straw
R12-Straw
R14-Medium Straw
R16-Light Amber
R17-Light Flame
R21-Goldern Amber
R24-Scarlet
R26-Light Red
R31-Salmon Pink
R33-N/C Pink
R34-Flesh Pink
R35-Light Pink
R36-Medium Pink
R45-Rose
R46-Magenta
R51-Suprise Pink
R52-Light Lavender
R54-Special Lavender

R58-Deep Lavender
R60-N/C Blue
R62-Booster Blue
R64-Light Steel Blue
R65-Daylight Blue
R68-Sky Blue
R77-Green Blue
R80-Primary Blue
R81-Urban Blue
R83-Medium Blue
R85-Deep Blue
R88-Light Green
R89-Moss Green
R91-Primary Green
R99-Chocolate
R114-Hamburg Frost
R119-Light Hamburg Frost
R120-Red Diffusion
R121-Blue Diffusion
R122-Green Diffusion
R123-Amber Diffusion
R132-Quarter Hamburg Frost